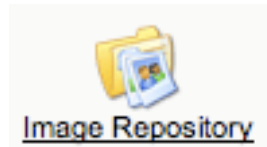
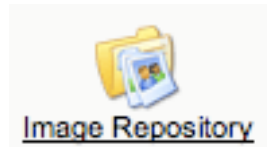


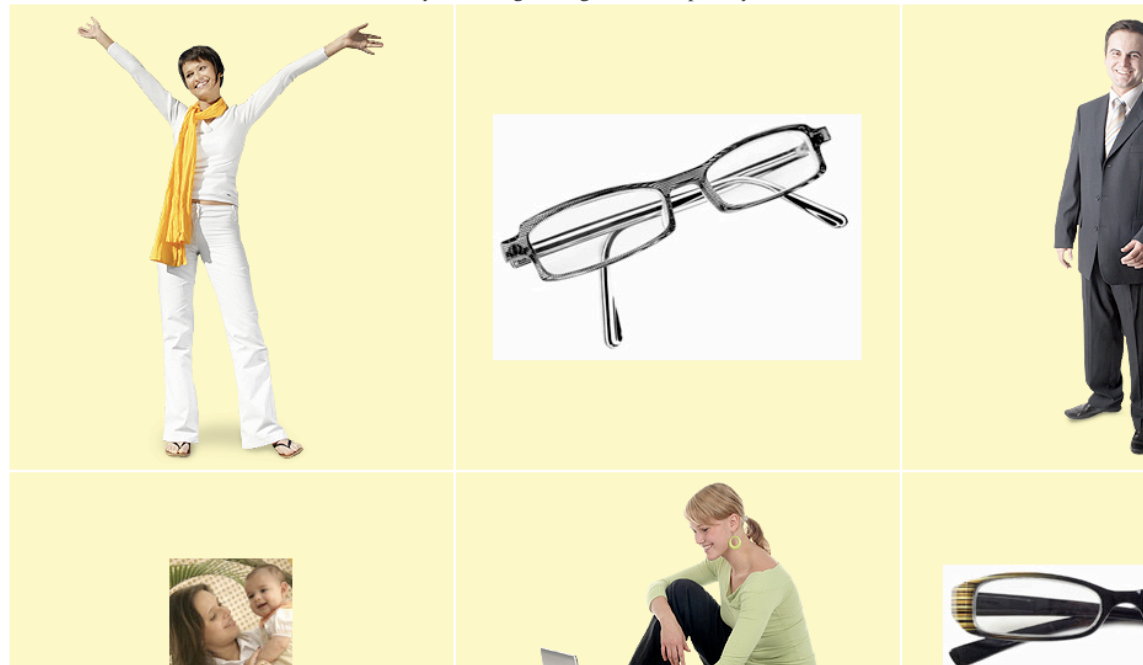
INSERTING AN IMAGE – IMAGE REPOSITORY

The image repository is a database of stock photography provided by Innexus available for your use.



Start by clicking on the  icon.

Simply drag the image of your choice from this window to the iEdit window.
* You must first click inside the iEdit window before you can drag an image from the repository window.



1. Navigate to the page you wish to edit
2. Drag and drop the image you want to the page

-OR-

1. Navigate to the page you wish to edit
2. Open Image Repository & Right Click the image you wish to use
3. **Copy Image**
4. Navigate back to the page you wish to edit & Right Click
5. **Paste** the image you want to add to the page